

# Wisenet Device Manager

Hanwha Techwin America

Aaron Saks

[hanwhasecurity.com](http://hanwhasecurity.com)

The webinar will begin  
shortly...

# Agenda

- Introduction
- Wisenet Device Manager Key Features
- Wisenet QR
- Live Demo
- Q&A

## Notes:

- This webinar is being recorded and will be available for replaying. The presentation materials will also be available in PDF format.
- Please visit <https://www.hanwhasecurity.com/training/upcoming-webinars/> to view webinars & sign up for future webinars.
- We will take Q&A time permitting. In case there is not time to get to all of the questions, we will reply to you individually afterwards. Please use the Chat or Q&A section.
- All participants have been put in to listen only mode.

# Webinars

[Home](#)[Training](#)[Webinars](#)

Join us for an informative webinar on the latest trends and technologies in the video surveillance industry. We cover various topics that will help you maximize the benefits of Hanwha Techwin's products and solutions.

## Get us on your schedule and join us!

Below is a list of our upcoming webinars. Click the **View Detail** button to the right of each topic to learn more and register. Registration is free.

Please check back often to register for newly added webinars.



# User Guide

## Wisenet Device Manager

Explains how to operate and manage Hanwha Techwin's network devices.



### PART 2 PRODUCTS

#### 2.01 EQUIPMENT

- A. Manufacturer: Hanwha Techwin  
<http://www.hanwha-security.com/>
- B. Model: Device Manager
- C. Alternates: None

#### 2.02 GENERAL DESCRIPTION

- A. The software shall provide an efficient way to manage Hanwha Techwin video surveillance devices in network including IP cameras, encoders, decoders, NVRs and DVRs by enabling users to remotely configure multiple devices simultaneously.
- B. The software shall search for Hanwha Techwin network devices in the same network, with a selectable search duration ranging from 5 – 60 seconds. The search results are available in the following modes
  1. Icons view with live image, model name, device status, device name, MAC address, IP address
  2. List view with live image, model name, device status, device name, IP mode, IP address, MAC address, firmware version, firmware status, ISP version
  3. Detail view with model name, device status, device name, IP mode, IP address, MAC address, firmware version, firmware status, ISP version, motion board version, serial number, IP version, last refresh time
- C. The software shall provide live viewer for cameras with valid credentials. Live viewer shall include the following.
  1. Live streaming of up to four cameras or up to four profiles from one camera.
  2. Device information
    - a. Device name
    - b. MAC address
    - c. IP address
    - d. HTTP port
    - e. Device port
    - f. Resolution
    - g. Profile number
    - h. Display in original size
    - i. Keep aspect ratio
    - j. Snapshot to save images in JPEG format.
  3. PTZ control
    - a. Pan/Tilt/Zoom control
    - b. Sensitivity of PTZ control
    - c. Move to a position set in coordinate with zoom ratio set by user
    - d. Add and delete preset
    - e. Move to home position
    - f. Focus setup

### Introduction

We live in an increasingly connected world, where more and more devices and systems are networked and shared with other systems. Convenience is a main driver behind this trend, as people have come to expect the ability to connect to and control devices and systems anywhere, anytime.

However, there is a downside to the unprecedented level of convenience provided by the growing number of networked devices, namely increased security risk. Because each device is an endpoint for networks, they introduce the potential to become entry points for hackers and others with malicious intents. In fact, in many of the most high-profile data breaches that have occurred recently, hackers were able to access corporate networks through PCs, HVAC, and other networked systems that failed to provide an adequate level of security to prevent these types of breaches.

While IP-based video surveillance and other solutions have grown in popularity to become the accepted standard for new deployments and upgrades, security systems are no exception. A hacker does not discriminate among networked devices whether it performs a critical function like security or not. As such, video surveillance cameras and other devices are among the lengthy list of potential network entry points that are continually being probed for vulnerabilities that can be exploited. Therefore, it is essential that organizations take the necessary measures to ensure the highest level of security for their networks and IP cameras, encoders, NVRs and DVRs. There are a number of best practices that should be undertaken to strengthen device security to prevent unauthorized access and protect end users video surveillance systems and their overall network. Hanwha is not only aware of these best practices but has built a number of technologies and capabilities into its products to make it easier for organizations to take these important steps toward improving network security. These items should be reviewed by the owner of security systems, IT personnel, and Systems Integrators installing systems to determine the level of security needed while balancing the ease of use, with acceptable risks.

This guide will show snapshots from network cameras where applicable. Most settings can be configured in batch for multiple cameras using the Wisenet Device Manager Software (Figure 1).

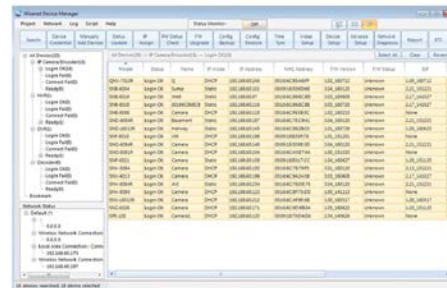


Figure 1

- Wisenet Device Manager is a software tool to use at every install.
- We have a user manual, A&E Spec Sheet, & quick start guide available.
- Our Cyber Security white paper uses Device Manager to efficiently deploy secure solutions.

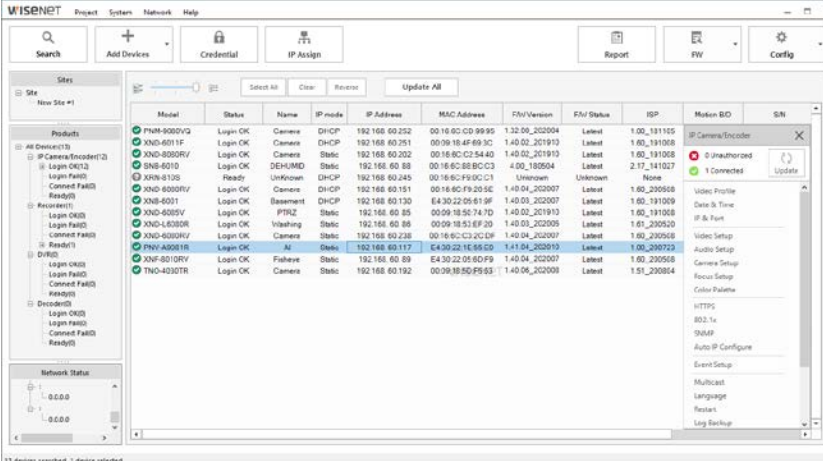


## Wisenet Device Manager

- Used during the commissioning, Installation, Operations, & Maintenance of a system.
- Full Featured Enterprise Tool to configure camera settings to many cameras at once in bulk.
- Does more than just IP addressing or firmware upgrade, or video profile settings.
- Does not require back end server.
- Does not provide backdoor capabilities.
- Allows management for system solutions, including IP cameras, Encoders, NVRs, DVRs, Decoders.

# Bulk Configuration Changes

- Wisenet Device Manager is a free software tool designed to let you quickly configure settings on multiple cameras at once.
- Key settings include: Password change, IP assign, firmware upgrade, video profiles, image adjustment, mirror/flip/hallway, reboot, factory default, time sync, focus, WiseStream, config backup/restore, motion detection, HTTPS, SNMP, 802.1x, Open Platform, audio, multicast, & report.
- Key information can be grouped and saved to a project file for offline review & documentation.



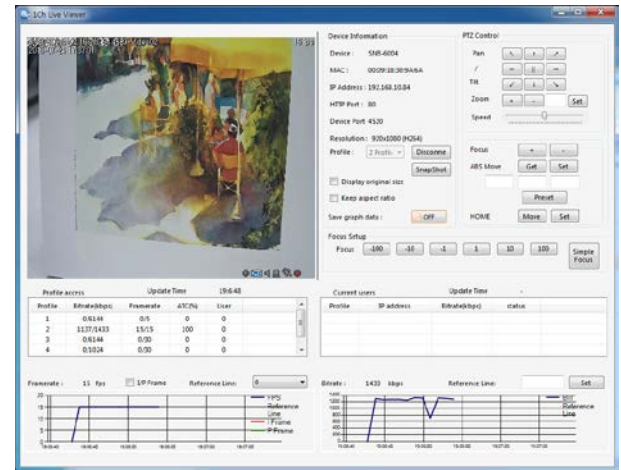
The screenshot displays the Wisenet Device Manager interface. The main window shows a list of cameras with columns for Model, Status, Name, IP mode, IP Address, MAC Address, FW/Version, FW Status, ISP, Motion ID, and SN. A table of camera data is visible below the header.

Model	Status	Name	IP mode	IP Address	MAC Address	FW/Version	FW Status	ISP	Motion ID	SN
PNM-9000V2	Login OK	Camera	DHCP	192.168.00.252	00:18:0C:0D:99:90	1.32.00_202004	Latest	1.00_131105	IP Camera/Encoder	
XND-6011F	Login OK	Camera	DHCP	192.168.00.251	00:09:18:4F:69:3C	1.40.02_201913	Latest	1.60_131108	0 Unauthorized 1 Connected	
XND-8000RV	Login OK	Camera	Static	192.168.00.202	00:18:0C:C2:54:40	1.40.03_201913	Latest	1.60_131008		
XNS-6010	Login OK	SD-WHM2	Static	192.168.00.80	00:18:0C:8B:80:C3	4.00_100504	Latest	2.17_141027		
XKN-612S	Ready	Unknown	DHCP	192.168.00.245	00:18:0C:F9:0C:C1	Unknown	Unknown	None		
XND-6000RV	Login OK	Camera	DHCP	192.168.00.151	00:18:0C:F9:20:5E	1.40.04_202007	Latest	1.60_230568	Video Profile	
XNB-6001	Login OK	Basement	DHCP	192.168.00.130	E4:30:22:05:61:9F	1.40.03_202007	Latest	1.60_131009	Date & Time	
XND-6000RV	Login OK	PTZ2	Static	192.168.00.85	00:09:18:50:74:7D	1.40.02_201913	Latest	1.60_131008	IP & Port	
XND-4-6000R	Login OK	VidWall	Static	192.168.00.88	00:09:18:51:EF:2D	1.40.03_202005	Latest	1.61_230520	Video Setup	
XND-6000RV	Login OK	Camera	Static	192.168.00.238	00:18:0C:C3:2C:2C	1.40.04_202007	Latest	1.60_230568	Audio Setup	
PNV-80001R	Login OK	N	Static	192.168.00.117	E4:30:22:16:66:00	1.41.04_202019	Latest	1.00_249729	Camera Setup	
XNF-6010RV	Login OK	Feature	Static	192.168.00.89	E4:30:22:05:60:F9	1.40.04_202007	Latest	1.60_230568	Focus Setup	
XNO-4030TR	Login OK	Camera	Static	192.168.00.192	00:09:18:9D:F5:63	1.40.06_202008	Latest	1.51_230854	Colour Palette	

The interface also includes a sidebar with navigation options like 'Sites', 'Products', and 'Devices'. A 'Config' window is open on the right, showing various settings such as 'Motion ID', 'ISP', 'HTTPS', 'SNMP', and 'Auto IP Configure'. The status bar at the bottom indicates '13 devices searched, 1 device selected'.

## Key unique features 1/2:

- Manage cameras, encoders, NVRs, DVRs, Decoders. Not just for cameras!
- Ability to add subnets W/O search, useful for VLANs, WAN.
- Ability to perform firmware download offline from cameras, Check for latest firmware, update multiple or sequential with latest version
- Encrypted project file, bookmarks, useful as a reference when not onsite
- Image snapshot in Excel report
- Script editor for testing camera and network performance
- 1-ch live viewer - compare multiple profiles or multiple cameras, useful for WiseStream & GOV tuning, can select an NVR to view channels. View bitrate and bandwidth graphs, with ability to save graph data
- Easily set multicast



- Loading a template to many cameras keeps IP address for ease of setup.
- Camera image setup with live reference display
- Easy PTZ preset config with name display from camera
- Multi-NIC aware
- Assign IP to multiple devices at once
- Status monitor for IT staff to use on a daily basis
- Easily re-focus all cameras at once
- Many cyber security related functions can be configured at once



## Remember – Normal Camera Initial Setup Flow

- Search the network to find cameras with Wisenet Device Manager
- Cameras will default to DHCP or 192.168.1.100



### **Wisenet Camera Configuration Flow with Wisenet Device Manager v2.3 and Wisenet X Series Firmware v1.40+**



# Wisenet QR

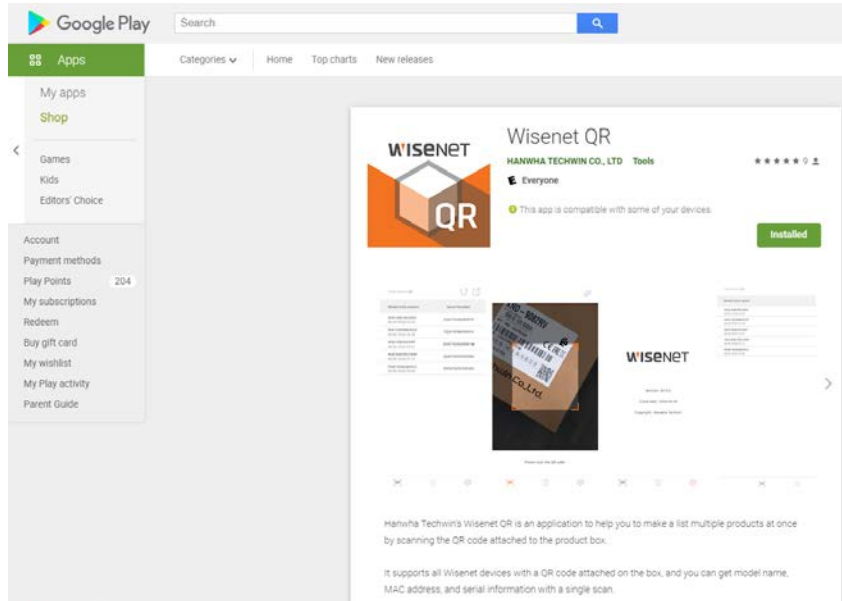
- Wisenet cameras now have a QR code on the bottom of the camera, as well as on the box.
- This allows you to perform an offline enrollment, capturing the camera's model number, serial number, & MAC address.
- This can be performed during staging or after the camera has been installed.



Total device (10)  

Model Information	Serial Number
XND-8080RV/NUS 00:09:18:4F:2D:38	ZFAR70GJ80005YJ
XNV-6081RE/NUS 00:09:18:64:CF:18	ZLQ670GN300004L
XND-8080RV/NUS 00:16:6C:C2:8B:0F	ZECA6V2J200011T
XND-8020F/NUS 00:09:18:4F:3C:18	ZFJ670GJ800004F
XND-8020F/NUS E4:30:22:06:26:85	ZG846V4KB0006RN
XND-6080RV/NUS 00:16:6C:C3:2C:DF	ZEC46V2J2000ABT
XNV-6011/NUS 00:09:18:4D:09:65	ZF9270GJ50005XB
XND-9082RF/NUS 00:09:18:65:C2:5D	ZQ8Z70GN500005W
PND-A9081RV/KAP 00:09:18:64:15:57	ZNKE70GN10000EE
LND-6012R/VUS E4:30:22:1D:0A:3F	ZND66V4N400077F

# Download the app from your app store



# Process

- 1. Scan QR code of cameras
- 2. Export CSV file
- 3. Edit CSV file to fill in IP address, username, & password.
- 4. Import file in Device Manager, pushing configuration to cameras
- You can then use Device Manager for further batch device configuration, firmware update, etc.
- You can use the USB Wi-Fi connection to aim & focus the cameras.
- Wisenet X PLUS modular cameras allows for easy staging with an accessible network port without needing to open the camera.

# Where to download Wisenet Device Manager?

The screenshot displays the Hanwha Techwin America website. The top navigation bar includes links for Products, Cybersecurity, Training, Markets, and Resources. The Resources menu is expanded, showing a list of categories: Resources (highlighted), Tools, Whitepapers, Brochures, SNMP MIB, Naming Convention, Literature, and Video. The Tools section is also highlighted, featuring a banner with the text 'Tools' and a sub-header 'A one-stop resource for design tools, calculators and more.' Below this, four tool cards are visible: Wisenet Device Manager, Wisenet Toolbox Plus, Wisenet WAVE System Calculator, and Wisenet WAVE Compatible Devices List. The Wisenet Knowledge Center and Innovation and Technology Experience (HITE) sections are also visible in the expanded Resources menu.

**Hanwha Techwin America** Products Cybersecurity Training Markets **Resources**

**Resources**  
Tools  
Whitepapers  
Brochures  
SNMP MIB  
Naming Convention  
Literature  
Video

**Press**  
News  
Press Releases  
Newsletters  
NDAA  
Notices

**Customer Stories**

**Sustainability**

**Events Calendar**

**Wisenet Knowledge Center**  
**Innovation and Technology Experience (HITE)**

**Tools**

A one-stop resource for design tools, calculators and more.

**Wisenet Device Manager**  
**Wisenet Toolbox Plus**  
**Wisenet WAVE System Calculator**  
**Wisenet WAVE Compatible Devices List**



- Q&A
- Feature requests.
- Thank You!

WISENET



500 Frank W. Burr Blvd., Suite 43

Teaneck, NJ 07666

[Hanwhasecurity.com](http://Hanwhasecurity.com)